

Commercial Property

Retail Building with Shop, Warehouse, and Outdoor Storage

# 100 Salt Point Turnpike

Poughkeepsie, NY 12603

For information about this property contact:

Jason Page (845.471.0191) / [jason@pageparkassociates.com](mailto:jason@pageparkassociates.com)

For information on our other available properties please visit our website [www.pageparkassociates.com](http://www.pageparkassociates.com)



Page Park Associates

85 Civic Center Plaza

P.O. Box 792

Poughkeepsie, New York 12601

Tel: 845.471.0191

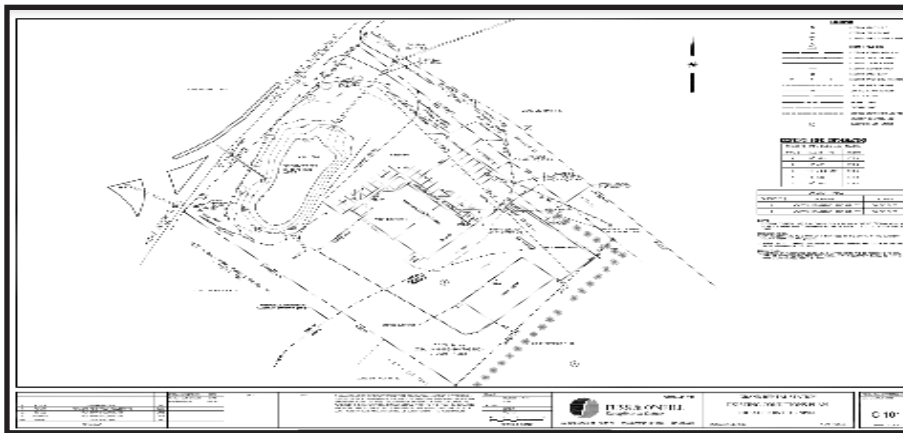
Email: [info@pageparkassociates.com](mailto:info@pageparkassociates.com)

Web: [www.pageparkassociates.com](http://www.pageparkassociates.com)

# 100 Salt Point Turnpike

Poughkeepsie, NY 12603

Page Park Associates is a real estate company, specializing in the acquisition, development, management and leasing of commercial properties throughout the Hudson Valley. Page Park Associates uses innovative ideas and has quickly become a leader in the commercial leasing industry.



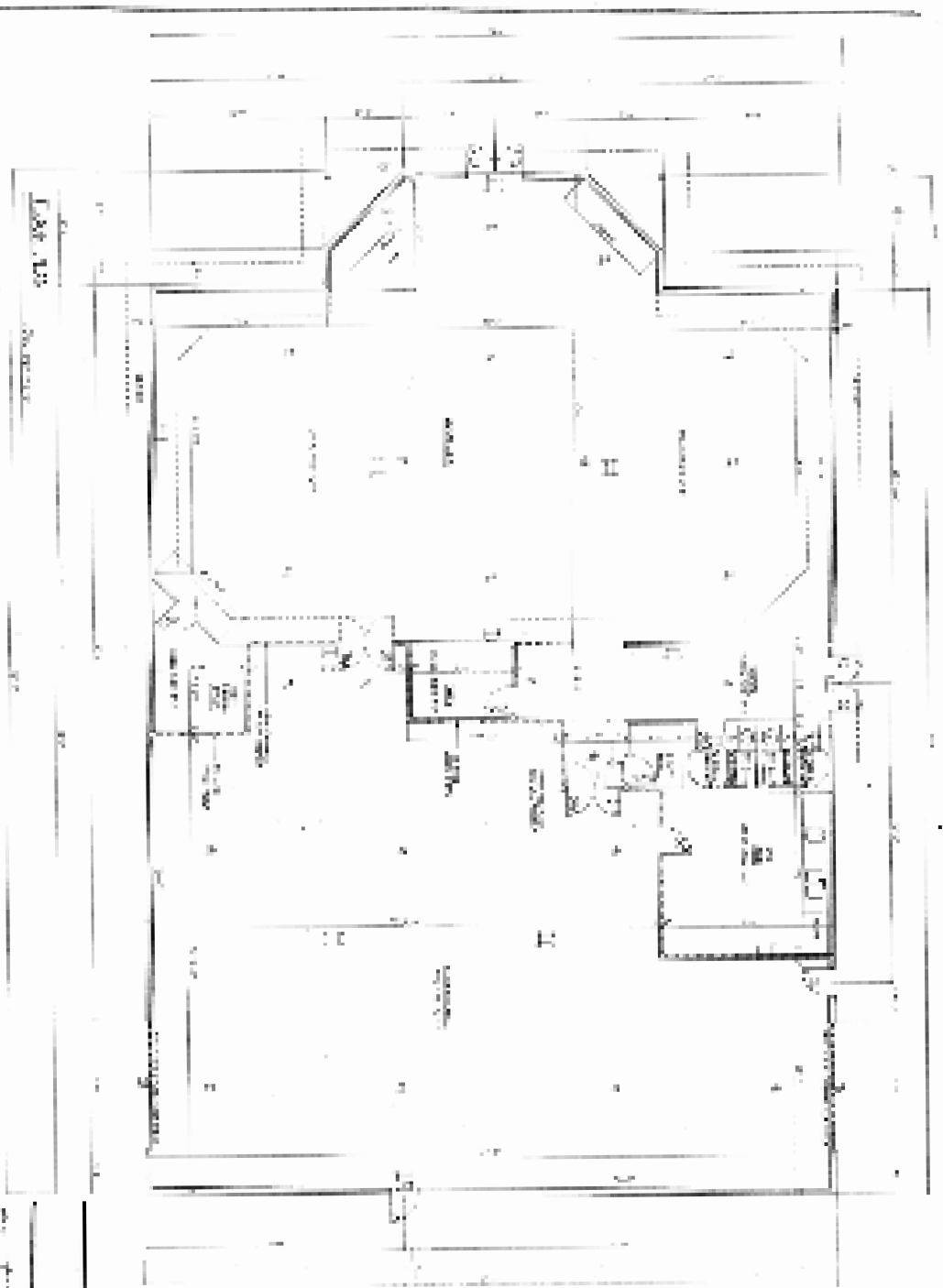
This is a highly visible property with great parking, located at the signalized intersection of Innis avenue and Salt Point Turnpike. The existing building is 8700 square feet, which is comprised of a 5325 retail/showroom area and high ceiling shop/warehouse space of 3375 square feet. There is also an adjacent free standing steel building of 5,000 square feet, with fenced in outdoor storage (photo below).



Your source for commercial space in the Mid-Hudson Valley. We are a private Real Estate Development Company in the business of leasing premium, quality commercial space.

**PAGE PARK**  
ASSOCIATES

1. Name of Client: Mr. J. S. Smith  
 2. Name of Building: 1911 Hill St.  
 3. Address: 1911 Hill St.  
 4. City: San Francisco, Cal.  
 5. State: Cal.  
 6. Date: Jan 15, 1911  
 7. Scale: 1/4" = 1'-0"  
 8. Drawing No.: 101  
 9. Sheet No.: 1 of 1  
 10. Architect: J. S. Smith  
 11. Engineer: J. S. Smith  
 12. Surveyor: J. S. Smith  
 13. Contractor: J. S. Smith  
 14. Inspector: J. S. Smith  
 15. Material: J. S. Smith  
 16. Labor: J. S. Smith  
 17. Cost: J. S. Smith  
 18. Time: J. S. Smith  
 19. Notes: J. S. Smith  
 20. Remarks: J. S. Smith



**LEGEND**

1	Office
2	Office
3	Office
4	Office
5	Office
6	Office
7	Office
8	Office
9	Office
10	Office
11	Office
12	Office

13. Office  
 14. Office  
 15. Office  
 16. Office  
 17. Office  
 18. Office  
 19. Office  
 20. Office

**CLARK ENGINEERING**  
 1000 MARKET STREET, SAN FRANCISCO, CALIF.  
 ARCHITECTS AND ENGINEERS  
 ESTABLISHED 1892