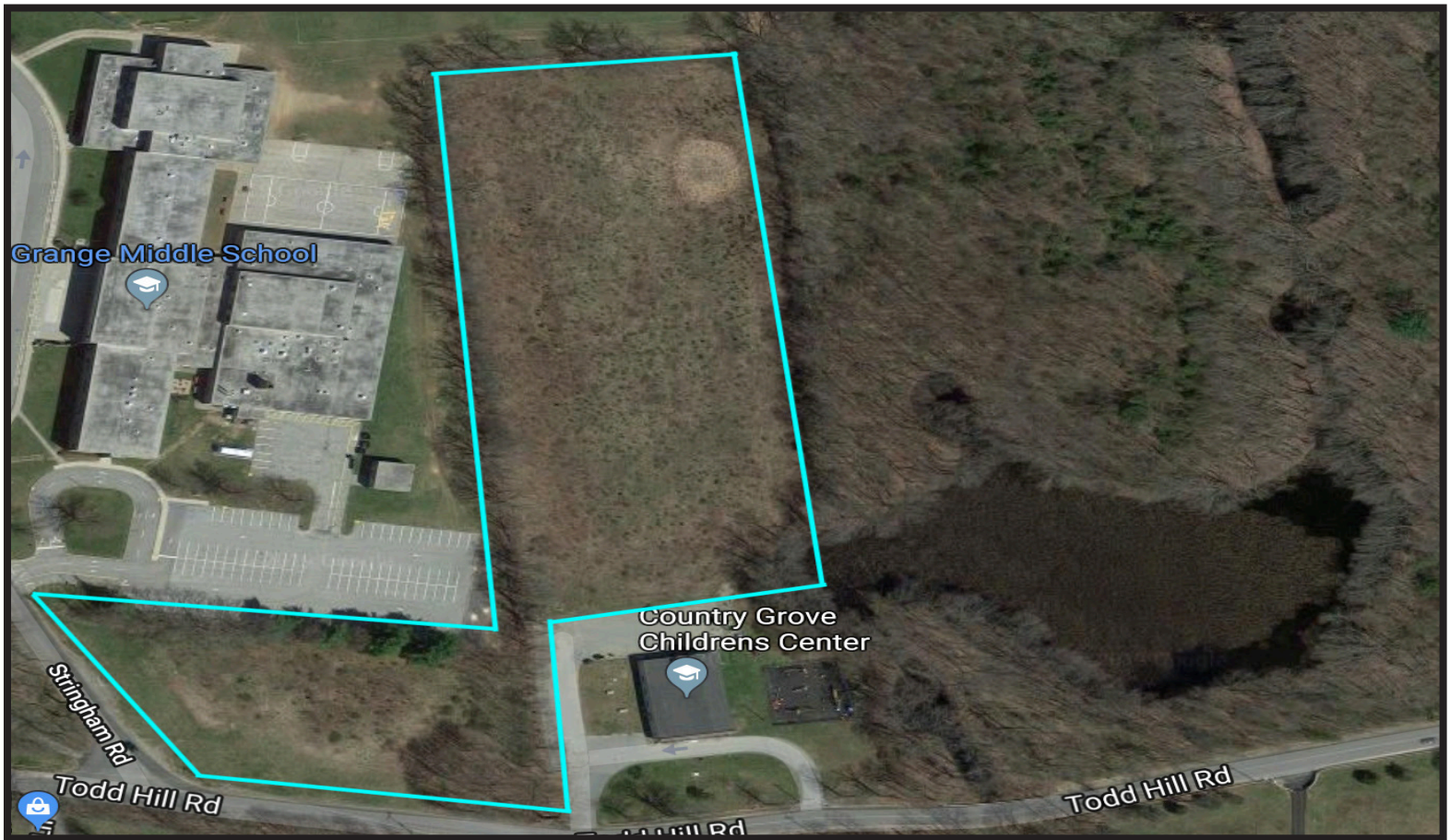


91 Todd Hill - Town of LaGrange Development Parcel



Page Park Associates is a real estate company, specializing in the acquisition, development, management and leasing of commercial properties throughout the Hudson Valley. Page Park Associates uses innovative ideas and has quickly become a leader in the commercial leasing industry.

845 471 0191
jason@pageparkassociates.com
www.pageparkassociates.com

Poughkeepsie Journal Building
85 Civic Center Plaza
Suite LL2
Poughkeepsie, NY 12601

This development parcel includes eight (8) acres of developable property, directly adjacent to the Lagrange Middle School in the Arlington Central School District. The property, on 91 Todd Hill Road, is ideally located at the corner of Stringham and Todd Hill Road in the LaGrange Town Center.